

## Excel Environ Rack Solutions

### New Euro Lock Southco Kits for Environ ER, CR and DCR Series

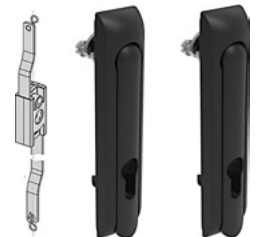
Part Number	Description
542-SCO-KTEU	CR/ER Rack Southco Euro Lock Kit 2 Handles Unloaded
546-SCO-KTEU	DCR Rack Southco Euro Lock Kit 2 Handles Unloaded

The Excel Euro Lock Southco Kits for Environ CR/ER racks (542-SCO-KTEU) and DCR racks (546-SCO-KTEU) provide a simple upgrade option, allowing customers to fit their own Euro profile barrel lock for enhanced security and controlled access to enclosed equipment.

Designed for straightforward installation, the kits are supplied with all necessary components. Manufactured from high-quality materials and finished to match the rack enclosure, the lock kits deliver a professional, tamper-resistant finish suitable for use in data centre, communications, and commercial environments.

#### Highlights:

- Secure key-operated Euro lock mechanism for front and rear doors
- Enables controlled access to internal equipment
- Compatible with Environ CR/ER (542-SCO-KTEU) and DCR (546-SCO-KTEU) rack series
- Espagnolette (3-point) locking for enhanced security
- Supplied with all fixings for quick and simple installation



excel  
Browse Environ  
Locks and Keys **online**

**Browse Environ Locks and Keys online:** <https://excel-networking.com/catalogue/c/racks-cabinets/components/cabinet-locks-keys>

### New Anti-Tilt Brackets for Environ ER and CR Series

Part Number	Description
542-506-BK	Excel Environ ER/CR Anti-Tilt Bracket (Racks without Feet) Black (4-Pack)
542-508-BK	Excel Environ ER/CR Anti-Tilt Bracket (Racks with Feet) Black (4-Pack)

The Excel Environ Anti-Tilt Brackets are designed to enhance the stability of Environ ER and CR floor-mounted racks by preventing forward movement when doors are open or equipment is extended.

Available in variants to suit racks with or without castors, the brackets provide a secure connection between the rack and floor, maintaining stability even under load. Manufactured from robust steel in a Black or Grey powder-coated finish, they offer both strength and a coordinated appearance with Excel enclosures.

These brackets form part of Excel's comprehensive rack accessory range, supporting safe installation and compliance with best practice standards.

#### Highlights:

- Prevents forward movement or tipping of racks
- Options available for racks with or without castors
- Provides additional stability during maintenance or equipment access
- Black and Grey finishes available
- Manufactured from robust steel for long-term durability
- Easy to install and compatible with Excel enclosures



excel  
Browse Environ  
Accessories **online**

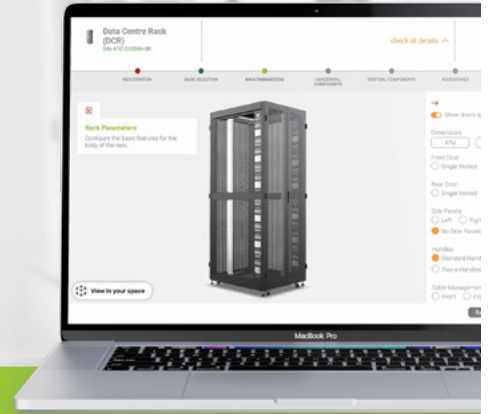
**Browse Environ Accessories online:** <https://excel-networking.com/catalogue/c/racks-cabinets/components>

Visit [www.excel-networking.com](http://www.excel-networking.com) for the full product details

Contact the Excel sales team on 0121 326 7557 or email [sales@excel-networking.com](mailto:sales@excel-networking.com)

# ENVIRON RACKS Configurator

Find the ideal **Environ Rack** for your network with our easy-to-use **Environ Racks Configurator**. Choose your rack series, height, width, depth, and key features to ensure a perfect fit for your setup. *Quick, simple, and efficient.*



*Access the Configurator online*

## Excel Copper and Fibre Solutions

### New Cable Management Feature for Excel ExpressNet Solution

Part Number	Description
100-231-CBM	Excel ExpressNet 8-Module Unloaded Modular Panel 1U Silver with Cable Management

The Excel ExpressNet Solution is now available with an integrated cable management design, providing improved organisation and strain relief for patch leads and incoming copper and fibre cabling cables.

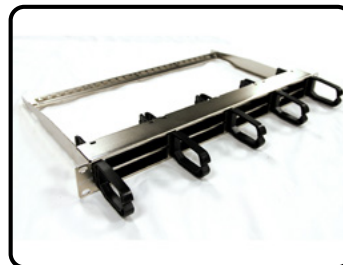
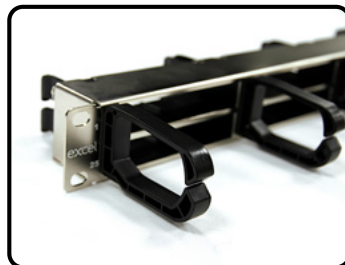
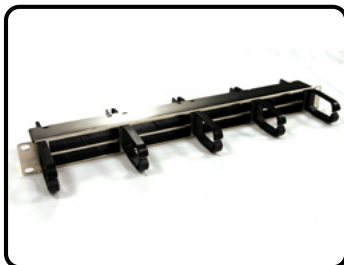
Each panel incorporates front-facing plastic cable management rings for effective patch lead routing and a rear-mounted metal management bar for securing and supporting the cable bundle. This combined approach ensures optimal bend radius control, reduced stress on terminations, and a consistent, professional installation finish.

The enhancement maintains full compatibility with existing ExpressNet assemblies and forms part of the factory-tested, pre-terminated solution covered under the Excel 25-year System Warranty.

#### Highlights:

- Integrated front and rear cable management
- Front plastic rings for patch cord routing
- Rear metal bar for cable support and organisation
- Maintains bend radius and strain relief
- Compatible with existing ExpressNet assemblies
- Fully tested and covered by the Excel System Warranty

excel  
Browse the  
ExpressNet Solution  
*online*



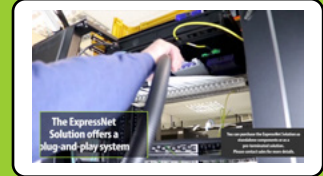
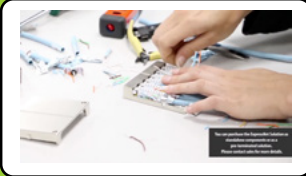
Browse the ExpressNet Solution online: <https://excel-networking.com/catalogue/search/expressnet>

Visit [www.excel-networking.com](http://www.excel-networking.com) for the full product details  
Contact the Excel sales team on 0121 326 7557 or email [sales@excel-networking.com](mailto:sales@excel-networking.com)



# ExpressNet Solution

Find out more about our ExpressNet Solution over on the [Excel Networking Youtube Channel](#).



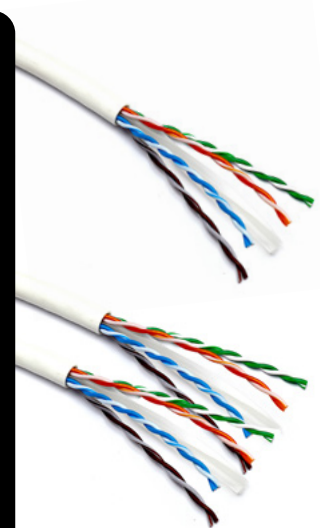
## Excel Slim and Dual Slim Category 6 U/UTP Cables – Compact Design, Full Compliance

Part Number	Description
100-980	Excel Solid Slim Cat6 Cable U/UTP 24AWG LSOH CPR Dca 305 m Box White
100-980-100	Excel Solid Slim Cat6 Cable U/UTP 24AWG LSOH CPR Dca 100 m Reel White
100-980-500	Excel Solid Slim Cat6 Cable U/UTP 24AWG LSOH CPR Dca 500 m Reel White
100-980-1000	Excel Solid Slim Cat6 Cable U/UTP 24AWG LSOH CPR Dca 1000 m Reel White
100-981-500	Excel Dual Slim Cat6 Cable U/UTP 24AWG LSOH CPR Dca 2x 500 m Reel White

Excel's Solid Slim and Dual Slim Category 6 U/UTP cables are designed for high-density installations where space and airflow are critical. Manufactured and tested to TIA/EIA 568-B.2-1, EN50173-1, and ISO/IEC 11801 Category 6 specifications, both cable types feature 24AWG solid copper conductors, twisted into four colour-coded pairs around a central X-shaped polyethylene separator. Encased in a Low Smoke Zero Halogen (LSOH) sheath and rated CPR Dca, they offer reliable performance with enhanced safety. Available in 100m, 305m box, 500m and 1000m reel options - including a convenient 2x500m Dual Slim format - this range provides flexible solutions for structured cabling needs.

### Highlights:

- Reduced Diameter – Now only 5.4mm allowing high density of cabling installation
- 24AWG Solid Copper Conductors – Ensures reliable signal transmission
- U/UTP Construction – Unscreened twisted pairs for standard Cat6 performance
- X-Shaped Polyethylene Separator – Maintains pair geometry and reduces crosstalk
- LSOH Sheath & CPR Dca Rated – Enhanced fire safety and compliance
- Flexible Length Options – Available in 100m, 305m box, 500m, 1000m reels, and Dual Slim 2x500m format
- Standards Compliant – Meets TIA/EIA 568-B.2-1, EN50173-1, and ISO/IEC 11801 Cat6 specifications



Browse the Excel range of Cables online: [https://excel-networking.com/catalogue/search/100-980\\*](https://excel-networking.com/catalogue/search/100-980*)

Visit [www.excel-networking.com](http://www.excel-networking.com) for the full product details  
Contact the Excel sales team on 0121 326 7557 or email [sales@excel-networking.com](mailto:sales@excel-networking.com)

## Excel 37 mm Deep Single and Double Gang Back Box

Part Number	Description
100-740	Excel Office Single Gang Back Box 37 mm
100-741	Excel Office Double Gang Back Box 37 mm

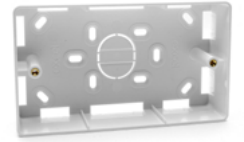
The Excel 37 mm Deep Single and Double Gang Back Boxes have been developed to complement the Excel Office Faceplate range, specifically to partner with the Excel 100-270 and 100-271 faceplates, delivering a precise colour, contour, and profile match for a seamless, professional finish.

Manufactured from robust, impact-resistant ABS plastic, the back boxes feature breakaway cable entries to allow flexible routing during installation and ensure compatibility with a wide range of structured cabling environments.

Supplied with fixing screws and covered under the Excel 25-year System Warranty, these back boxes provide a reliable, installer-friendly solution for high-quality terminations.

### Highlights:

- Designed to match the Excel 100-270 and 100-271 office faceplates
- Exact colour, contour, and radius alignment for a unified appearance
- Breakaway cable entries for adaptable cable routing
- Durable ABS construction for long-term reliability
- Supplied with fixing screws
- Covered by the Excel 25-year system warranty



excel



**Browse the Excel range of Backboxes online:** <https://excel-networking.com/catalogue/c/structured-cabling/backboxes-floorboxes>

Visit [www.excel-networking.com](http://www.excel-networking.com) for the full product details

Contact the Excel sales team on 0121 326 7557 or email [sales@excel-networking.com](mailto:sales@excel-networking.com)

European Headquarters  
Excel House  
Junction Six Industrial Park  
Electric Avenue  
Birmingham B6 7JJ  
England

[www.excel-networking.com](http://www.excel-networking.com)